



Perfect

Engineers **SINCE 1988**





Perfect Engineers



Established in year 1988 , Perfect engineers is now a Full-fledged manufacturing firm of Quick release coupling , Non return valve, Minimes coupling, Needle valve, Camlock coupling, Tube fittings . Perfect Engineers has been in the field of manufacturing and supply of Quick release coupling , Non return valve, Minimes coupling, Needle valve, Camlock coupling & Tube fittings since a decade now. We have a sound business standing with excellent turnover and holding a name in the global market by giving the best quality & service.

Using the latest machinery and infrastructure, Perfect Engineers an ISO 9001:2015 certified company manufactures a wide range of Quick release coupling , Non return valve, Minimes coupling, Needle valve , Camlock coupling & Tube fittings in different sizes and metals like brass, stainless steel, Monel and other materials as per the client's requirement. All the products are manufactured under stringent quality control and supplied globally and throughout India, also dealing directly with OEM'S.

At Perfect Engineers , we have been participating in key infrastructure and industrial government projects of India & abroad. Highly trained and experienced team of professionals equipped with the latest in information technology, coupled with the company's financial strength, allow our group to present innovative solutions and services to our customers.

We can Manufacture & Supply you with the following products.

- | | |
|--------------------------------------|----------------------|
| 1. Hydraulic Quick release couplings | 4. Non return valves |
| 2. Pneumatic Quick release couplings | 5. Bauer couplings |
| 3. Camlock couplings | 6. Minimes couplings |

INFRASTRUCTURE

We are firmly supported by a well-developed modernized infrastructure facility, which enables us to carry out all business operations with ease.

- | | |
|--|-------------------------|
| • Lathe machines - 6 | • Drilling machines - 2 |
| • Hydraulic Testing Pump (up to 10000 psi)-1 | • CNC Lathe Machine- 4 |

CLIENT LIST

- | | |
|---------------------------|-------------------------------------|
| • DRDO | • Uttam galva steels |
| • JSW Steel | • CG power and industrial solutions |
| • Larsen & Toubro Limited | |



MISSION



VISION



VALUE

VISION

“To Experience & Explore all Possible Opportunities by providing the right solutions with the help of Resources & Technology for the betterment of People & Organisation.”

MISSION (BHAG)

“To Become A 50 Cr. Diversified Group of Companies By the Year 2030”

CORE VALUES

- Self Belief
- Passion & Possibility Thinking
- Growing with The Team
- Continuous Improvement & Innovations
- No entitlement Attitude
- Customers for Life (Aspirational)

VIVID DESCRIPTION

- We will have more than 1,00,000 active clients worldwide and there will be atleast 2 of our dealer network in each state/city/country worldwide contributing towards the betterment of people & organisations.
- 20 Years from now, Perfect Engineers will be known as Market Leaders in Hydraulic Industry and our uniqueness in products & systems will be just one click away from the people of the world.
- All the employees in Perfect Engineers will work with utmost passion, bringing innovative ideas and with an absolute no entitlement attitude such that we will be known as a “HUB FOR MANUFACTURING LEADERS” withing the world.
- Our Business and Brand promise will be 100% Advance payments and we will offer NO CREDIT TERMS to any clients worldwide.
- Our Companies will be recognised as Examples and Role Models for Effective Functioning of Business and practices followed by us and shall become a source of guidance and direction for the most SOUGHT-AFTER companies in the world.

Hydraulic Quick Coupler



K-Series ISO7241 Series “A” Interchange.

- Interchange Data :**
- Interchangeable to ISO7241 Series ‘A’.
 - Parker 6600-series, Aeroquip/Eaton FD 56 (5600).
 - Faster ANV, Hansen HA 15000, Safeway S56-series, DNP-PAV 1 series, Stucchi-BIR series.
- Materials :**
- Machined components are manufactured using solid steel bar stock.
 - Stainless steel balls, retaining rings and springs maximize corrosion resistance and extend service life.
 - Steel componentry is plated using ROHS complaint trivalent chrome.
 - Steel coupler sleeves are hardened to resist deformation and maximise service life
 - Steel nipples are hardened to provide heavy duty performance
- Seal Components :**
- Nitrile (Buna-N) seals are standard, providing a temperature range of -40°C (- 40°F) to +121°C (250°F).
 - Couplers have a PTFE Anti-Extrusion ring.
 - Valve seals are crimped in place to maintain integrity during excessive flow conditions and pressurised connection.

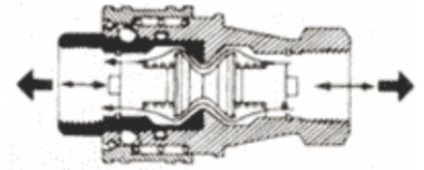
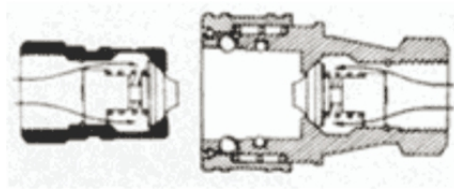


COUPLER HANDLING PRECAUTIONS

1. Avoid Connection and disconnecting the coupler when pressure is applied to preclude possible accident.
2. Coupler has been designed to insure complete safety, However avoid subjecting it to shock.
3. Remove foreign matter from the Fluid with a filter before hand. If Foreign matter mixed in the fluid, operation of the internal valve will be adversely effected, causing leakage.
4. Do not weld the coupler directly to Panels and fixtures. This damage the internal seal causing leakage and imperfect flow.
5. When disconnecting the coupler in dusty and sandy locations, always use the specified dust cap.
6. Never tap the valve section with a hammer, etc. to bleed residual pressure.

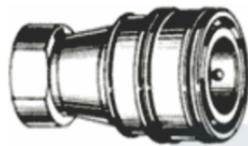
APPLICATION

For Leakproof Handling of PROCESS LINE, CHEMICALS, GASES, LIQUIDS, HYDRAULICS AND SERVICE LINES LIKE COMPRESSED AIR, STEAM WATER, VACUUM, BRINE, CHILLED WATER, NITROGEN, BREATHING AIR ETC. IN CHEMICAL, REFINARIES, FERTILISER, ATOMIC POWER PLANTS, PHARMACEUTICAL, ENGG., MACHINE TOOL, AUTOMOBILE, PAINT, DYE-STUFF & VARNISH, PETROLEUM, FURNACES, TEXTILE MACHINES, REFRIGERATION INDUSTRIES.



The valves of the socket and plug are pushed against each other, the interior of the coupling is opened, and the outside of the plug and there is no leakage to the outside.

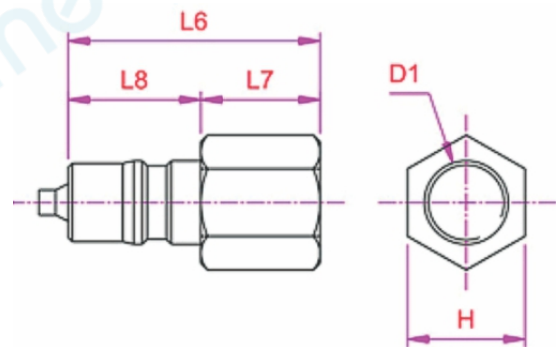
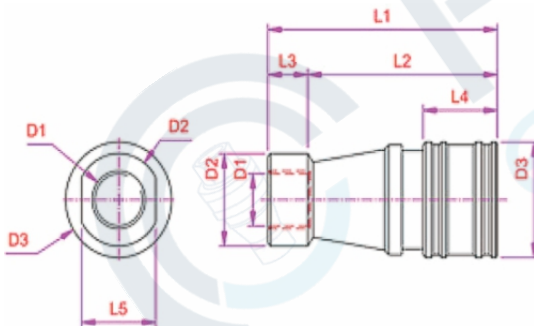
- Since both the plug and socket have a valve, there is no leakage of gas, oil, etc. from either the socket or plug ends when disconnected.
- Since they are manufactured by an especially high precision machining process, air tightness is a high 10⁻⁴ mmHg / sec.
- The hose does not twist.
- Designed for use in a wide range of applications



COUPLER (BSP(F))



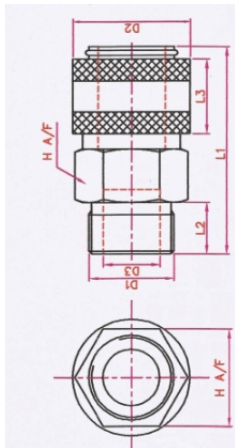
ADAPTOR (BSP(F))



| QRC SIZE (D1) | D2 | D3 | L1 | L2 | L3 | L4 | L5 | L6 | L7 | L8 | H | |
|---------------|-------|-------|-------|-------|-------|------|------|-------|------|------|----------|------|
| 1/8" | 16.0 | 20.0 | 43.0 | 35.8 | 7.5 | 14.0 | 14.0 | 30.0 | 14.2 | 15.8 | 14.0 A/F | |
| 1/4" | 22.0 | 28.0 | 58.0 | 48.0 | 11.0 | 18.0 | 19.0 | 36.0 | 13.0 | 23.0 | 19.0 A/F | |
| 3/8" | 26.0 | 35.0 | 65.0 | 52.0 | 14.0 | 20.0 | 22.0 | 40.0 | 14.0 | 26.0 | 22.0 A/F | |
| 1/2" | 32.0 | 42.0 | 71.0 | 56.0 | 15.0 | 24.0 | 28.0 | 45.0 | 19.0 | 26.0 | 28.0 A/F | |
| 3/4" | 36.0 | 45.0 | 76.0 | 58.0 | 18.0 | 26.0 | 32.0 | 49.0 | 20.0 | 29.0 | 32.0 A/F | |
| 1 1/4" | 58.0 | 70.0 | 95.0 | 72.0 | 23.0 | 29.0 | 52.0 | 59.0 | 24.0 | 35.0 | 51.0 A/F | |
| 1 1/2" | 64.0 | 75.0 | 95.0 | 72.0 | 23.0 | 29.0 | 61.0 | 59.0 | 24.0 | 35.0 | 55.0 A/F | |
| QRC SIZE (D1) | D2 | D3 | D4 | L1 | L2 | L3 | L4 | L5 | L6 | L7 | L8 | H |
| 1" | 45.0 | 55.0 | 45.0 | 85.0 | 63.0 | 22.0 | 27.0 | 41.0 | 56.0 | 26.0 | 30.0 | 41.0 |
| 2" | 75.0 | 85.0 | 70.0 | 113.0 | 84.0 | 30.0 | 33.0 | 69.0 | 72.0 | 30.0 | 42.0 | 66.0 |
| QRC SIZE (D1) | D2 | D3 | D4 | L1 | L2 | L3 | L4 | L5 | L6 | L7 | L8 | H |
| 2 1/2" | 90.0 | 108.0 | 90.0 | 125.0 | 100.0 | 25.0 | 37.0 | 84.0 | 75.0 | 22.0 | 53.0 | 84.0 |
| 3" | 110.0 | 130.0 | 110.0 | 130.0 | 105.0 | 25.0 | 37.0 | 104.0 | 75.0 | 22.0 | 53.0 | 84.0 |

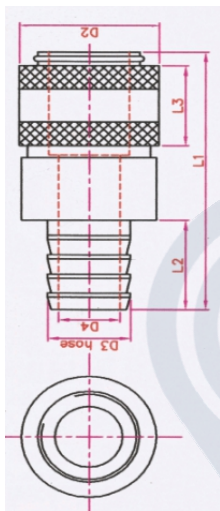
Single Check Valve

TYPE-SC is most popular type coupler used to connect air piping in factories and used to connect air tools with hoses etc. Both socket and plug have hose use and screw use advantages. There is also a variety of other types. The types 20, 30, 40, and Types 400 and 600 are completely interchangeable. With one check valve built into the coupling only whereas plugs do not have any check valves. Can be advantageous used where one side of the flow system needs to be sealed on disconnection.



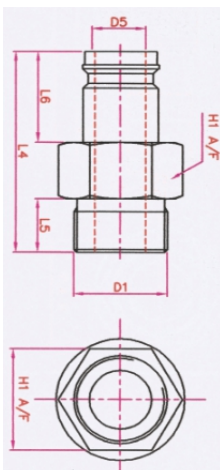
COUPLER BSP(M)

| QRC SIZE (D1) | D2 | D3 | L1 | L2 | L3 | H A/F | |
|---------------|------|------|-------|-------|------|--------|----|
| 1/8" | 17.0 | 4.5 | 40.0 | 8.0 | 16.0 | 14 A/F | |
| 1/4" | 22.0 | 6.5 | 53.0 | 11.0 | 19.0 | 19 A/F | |
| 3/8" | 22.0 | 8.0 | 53.0 | 11.0 | 19.0 | 19 A/F | |
| 1/2" | 32.0 | 13.0 | 69.0 | 14.5 | 25.0 | 28 A/F | |
| 3/4" | 38.0 | 17.0 | 77.0 | 17.0 | 28.0 | 32 A/F | |
| 1" | 45.0 | 22.0 | 81.0 | 20.0 | 29.0 | 38 A/F | |
| 1 1/4" | 48.0 | 30.0 | 88.0 | 22.0 | 27.0 | 46 A/F | |
| 1 1/2" | 60.0 | 35.0 | 104.0 | 28.0 | 32.0 | 55 A/F | |
| QRC SIZE (D1) | D2 | D3 | D6 | L1 | L2 | L3 | R |
| 2" | 75.0 | 45.0 | 75.0 | 116.0 | 26.0 | 33.0 | 72 |



COUPLER (HOSE)

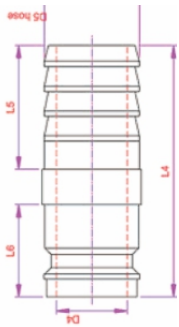
| QRC SIZE (D1) | D2 | D4 | D5 | L1 | L2 | L3 | H A/F |
|---------------|------|------|------|-------|------|------|--------|
| 1/8" | 17.0 | 6.5 | 4.0 | 54.0 | 20.0 | 16.0 | 14 A/F |
| 1/4" | 22.0 | 8.0 | 5.0 | 66.0 | 25.0 | 19.0 | 19 A/F |
| 3/8" | 22.0 | 10.0 | 6.0 | 67.0 | 25.0 | 19.0 | 19 A/F |
| 1/2" | 32.0 | 13.0 | 9.0 | 84.0 | 30.0 | 25.0 | 28 A/F |
| QRC SIZE (D1) | D2 | D3 | D4 | L1 | L2 | L3 | H1 A/F |
| 3/4" | 38.0 | 20.0 | 15.0 | 97.0 | 36.0 | 28.0 | 28 A/F |
| 1" | 45.0 | 27.0 | 19.0 | 102.0 | 40.0 | 29.0 | 36 A/F |
| 1 1/4" | 48.0 | 34.0 | 25.0 | 115.0 | 40.0 | 27.0 | 45 A/F |
| 1 1/2" | 60.0 | 40.0 | 28.0 | 129.0 | 53.0 | 32.0 | 50 A/F |
| 2" | 75.0 | 54.0 | 43.0 | 154.0 | 65.0 | 33.0 | 60 A/F |



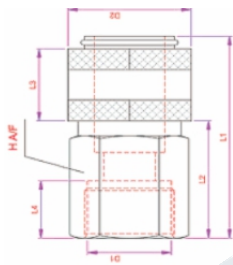
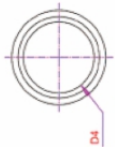
ADAPTOR (BSP(M))

| QRC SIZE (D1) | D3 | L4 | L5 | L6 | H A/F |
|---------------|------|------|------|------|--------|
| 1/8" | 5.0 | 28.0 | 8.0 | 14.0 | 14 A/F |
| 1/4" | 6.5 | 33.0 | 11.0 | 16.5 | 19 A/F |
| 3/8" | 6.0 | 35.0 | 12.0 | 16.5 | 19 A/F |
| 1/2" | 11.0 | 43.0 | 14.5 | 22.0 | 28 A/F |
| QRC SIZE (D1) | D5 | L4 | L5 | L6 | H1 A/F |
| 3/4" | 15.0 | 50.0 | 17.0 | 25.0 | 28 A/F |
| 1" | 19.0 | 51.0 | 17.0 | 25.0 | 36 A/F |
| 1 1/4" | 25.0 | 55.0 | 20.0 | 25.0 | 45 A/F |
| 1 1/2" | 28.0 | 71.0 | 25.0 | 34.0 | 50 A/F |
| 2" | 42.0 | 67.0 | 25.0 | 30.0 | 60 A/F |

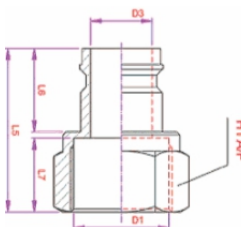
Single Check Valve



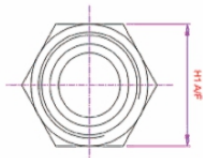
ADAPTOR (HOSE)



COUPLER



ADAPTOR

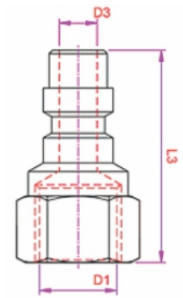


| QRC SIZE (D1) | D4 | L4 | L5 | L6 | H A/F |
|---------------|------|-------|------|------|--------|
| 1/8" | 3.5 | 41.0 | 21.5 | 14.0 | 14 A/F |
| 1/4" | 5.5 | 46.0 | 25.0 | 16.5 | 19 A/F |
| 3/8" | 6.0 | 46.0 | 25.0 | 16.5 | 19 A/F |
| 1/2" | 11.0 | 58.0 | 29.0 | 21.0 | 28 A/F |
| 3/4" | 15.0 | 67.0 | 34.0 | 26.0 | 32 A/F |
| 1" | 20.0 | 72.0 | 35.0 | 26.0 | 38 A/F |
| 1 1/4" | 22.0 | 85.0 | 50.0 | 25.0 | 46 A/F |
| 1 1/2" | 28.0 | 101.0 | 53.0 | 34.0 | 55 A/F |
| QRC SIZE (D1) | D4 | L4 | L5 | L6 | R |
| 2" | 42.0 | 102.0 | 65.0 | 30 | 72 |

| QRC SIZE (D1) | D2 | L1 | L2 | L3 | L4 | H A/F |
|---------------|------|-------|------|------|------|--------|
| 1/4" | 17.0 | 40.0 | 19.0 | 16.0 | 10.0 | 14 A/F |
| 1/4" | 22.0 | 56.0 | 34.0 | 19.0 | 12.0 | 19 A/F |
| 3/8" | 22.0 | 54.0 | 32.0 | 19.0 | 12.0 | 19 A/F |
| 1/2" | 32.0 | 68.0 | 40.0 | 25.0 | 14.0 | 28 A/F |
| 3/4" | 38.0 | 78.0 | 45.0 | 28.0 | 19.0 | 32 A/F |
| 1" | 45.0 | 82.0 | 47.0 | 29.0 | 23.0 | 38 A/F |
| 1 1/4" | 48.0 | 88.0 | 54.0 | 27.0 | 23.0 | 46 A/F |
| 1 1/2" | 60.0 | 104.0 | 66.0 | 32.0 | 25.0 | 35 A/F |
| QRC SIZE (D1) | D2 | L1 | L2 | L3 | L4 | H1 |
| 2" | 75.0 | 115.0 | 77.0 | 33 | 28 | 65 A/F |

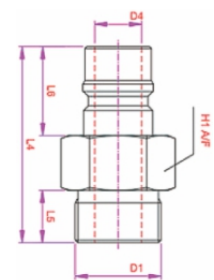
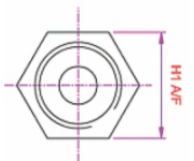
| QRC SIZE (D1) | D3 | L5 | L6 | L7 | H1 A/F | |
|------------------|------|-------|------|------|--------|--------|
| 1/4" | 17.0 | 40.0 | 19.0 | 16.0 | 14 A/F | |
| 1/4" | 22.0 | 56.0 | 34.0 | 19.0 | 16 A/F | |
| 3/8" | 22.0 | 54.0 | 32.0 | 19.0 | 19 A/F | |
| 1/2" | 32.0 | 68.0 | 40.0 | 25.0 | 25 A/F | |
| 3/4" | 38.0 | 78.0 | 45.0 | 28.0 | 32 A/F | |
| 1" | 45.0 | 82.0 | 47.0 | 29.0 | 38 A/F | |
| 1 1/4" | 48.0 | 88.0 | 54.0 | 27.0 | 46 A/F | |
| 1 1/2" | 60.0 | 104.0 | 66.0 | 32.0 | 55 A/F | |
| QRC SIZE (D1) | D4 | L5 | L6 | L7 | L4 | H1 |
| 2" | 75.0 | 115.0 | 77.0 | 33 | 28 | 65 A/F |

Straight Through Valve



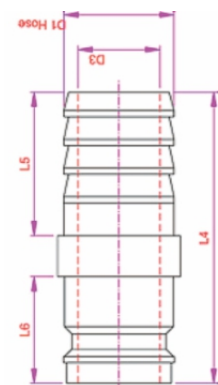
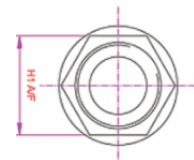
ADAPTOR (BSP(F))

| QRC SIZE (D1) | D3 | L3 | H1 A / F |
|---------------|------|------|----------|
| 1/8" | 5.0 | 30.0 | 14 A / F |
| 1/4" | 6.5 | 32.0 | 16 A / F |
| 3/8" | 7.0 | 38.0 | 22 A / F |
| 1/2" | 11.0 | 45.0 | 25 A / F |
| 3/4" | 15.0 | 50.0 | 32 A / F |
| 1" | 19.0 | 50.0 | 38 A / F |
| 1 1/4" | 24.0 | 66.0 | 45 A / F |
| 1 1/2" | 31.0 | 61.0 | 55 A / F |
| 2" | 48.0 | 74.0 | 65 A / F |



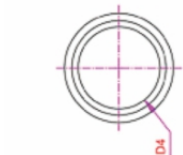
ADAPTOR (BSP(M))

| QRC SIZE (D1) | D4 | L4 | L5 | L6 | H1 A / F |
|---------------|------|------|------|------|------------|
| 1/8" | 5.0 | 31.0 | 10.0 | 15.5 | 12.5 A / F |
| 1/4" | 6.5 | 35.0 | 11.0 | 16.5 | 14 A / F |
| 3/8" | 7.0 | 37.0 | 12.0 | 20.0 | 17 A / F |
| 1/2" | 12.0 | 47.0 | 14.0 | 25.0 | 22 A / F |
| 3/4" | 15.0 | 50.0 | 15.0 | 25.0 | 28 A / F |
| 1" | 19.0 | 55.0 | 20.0 | 25.0 | 36 A / F |
| 1 1/4" | 24.0 | 68.0 | 20.0 | 25.0 | 45 A / F |
| 1 1/2" | 31.0 | 69.0 | 25.0 | 34.0 | 55 A / F |
| 2" | 48.0 | 82.0 | 25.0 | 30.0 | 65 A / F |



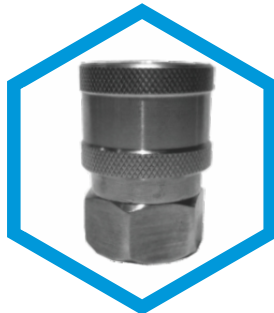
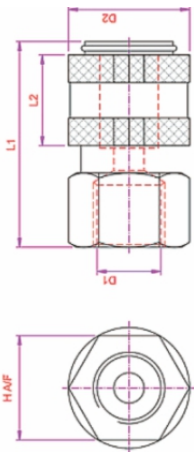
ADAPTOR (HOSE)

| QRC SIZE (D1) | D3 | L4 | L5 | L6 |
|---------------|------|-------|------|------|
| 1/8" | 4.0 | 40.0 | 20.0 | 14.0 |
| 1/4" | 5.0 | 49.0 | 25.0 | 16.5 |
| 3/8" | 6.0 | 53.0 | 25.0 | 16.5 |
| 1/2" | 9.0 | 62.0 | 30.0 | 22.0 |
| 3/4" | 15.0 | 66.0 | 30.0 | 25.0 |
| 1" | 19.0 | 73.0 | 40.0 | 25.0 |
| 1 1/4" | 25.0 | 90.0 | 45.0 | 25.0 |
| 1 1/2" | 28.0 | 89.0 | 45.0 | 34.0 |
| 2" | 43.0 | 103.0 | 50.0 | 30.0 |



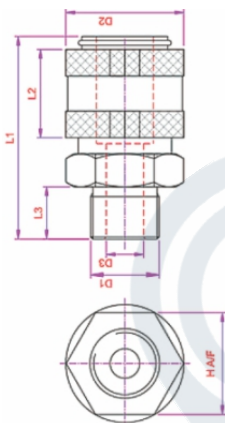
Straight Through Valve

This is a double path open type coupler which does not have a valve mechanism at either the socket nor the plug. It is used in piping systems in which blocking of the fluid when disconnected is unnecessary and closure of lines is achieved by back up valves. Permit full flow capability due to their smooth and accurately finished bores.



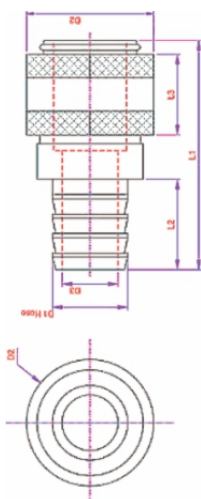
COUPLER (BSP(F))

| QRC SIZE (D1) | D2 | L1 | L2 | R |
|---------------|------|------|------|----------|
| 1/8" | 17.0 | 29.0 | 16.0 | 16 A / F |
| 1/4" | 22.0 | 35.0 | 16.0 | 19 A / F |
| 3/8" | 25.0 | 42.0 | 21.0 | 22 A / F |
| 1/2" | 32.0 | 46.0 | 25.0 | 28 A / F |
| 3/4" | 35.0 | 48.0 | 26.0 | 32 A / F |
| 1" | 42.0 | 50.0 | 26.0 | 38 A / F |
| 1 1/4" | 55.0 | 66.0 | 29.0 | 50 A / F |
| 1 1/2" | 60.0 | 61.0 | 31.0 | 55 A / F |
| 2" | 84.0 | 74.0 | 34.0 | 75 A / F |



COUPLER (BSP(M))

| QRC SIZE (D1) | D2 | D3 | L1 | L2 | L3 | R |
|---------------|------|------|------|------|------|----------|
| 1/8" | 19.0 | 4.5 | 35.0 | 15.0 | 10.0 | 16 A / F |
| 1/4" | 22.0 | 6.5 | 38.0 | 16.0 | 11.0 | 19 A / F |
| 3/8" | 25.0 | 9.0 | 48.0 | 21.0 | 12.0 | 22 A / F |
| 1/2" | 32.0 | 12.0 | 54.0 | 25.0 | 14.0 | 28 A / F |
| 3/4" | 35.0 | 17.0 | 58.0 | 26.0 | 15.0 | 32 A / F |
| 1" | 42.0 | 24.0 | 60.0 | 26.0 | 20.0 | 38 A / F |
| 1 1/4" | 55.0 | 30.0 | 57.0 | 29.0 | 20.0 | 50 A / F |
| 1 1/2" | 60.0 | 35.0 | 57.0 | 31.0 | 25.0 | 55 A / F |
| 2" | 84.0 | 45.0 | 80.0 | 34.0 | 25.0 | 75 A / F |



COUPLER (HOSE)

| QRC SIZE (D1) | D2 | D3 | L1 | L2 | L3 |
|---------------|------|------|-------|------|------|
| 1/8" | 17.0 | 4.0 | 45.0 | 20.0 | 16.0 |
| 1/4" | 22.0 | 5.0 | 52.0 | 25.0 | 19.0 |
| 3/8" | 22.0 | 6.0 | 60.0 | 25.0 | 19.0 |
| 1/2" | 32.0 | 9.0 | 70.0 | 30.0 | 25.0 |
| 3/4" | 35.0 | 15.0 | 79.0 | 36.0 | 28.0 |
| 1" | 42.0 | 19.0 | 80.0 | 40.0 | 29.0 |
| 1 1/4" | 55.0 | 25.0 | 82.0 | 45.0 | 27.0 |
| 1 1/2" | 60.0 | 28.0 | 96.0 | 45.0 | 32.0 |
| 2" | 75.0 | 43.0 | 105.0 | 50.0 | 33.0 |

Quick Connect Couplers



Model 20 PF offered come in heavy duty construction finish and provide for quick coupling support. The product provides for proven and positive connection using ball-locking mechanism and find suitability for use with pneumatic systems. Some of its features include heavy duty construction design; accepting 1/4 NITTO type plugs; capability to handle working pressures of less than 145 Psi; working temperature range of -20 to 70 degree Celsius and others.

Model 20 PF

| Features: |
|--|
| 1. Accepts 1/4 NITTO type plugs |
| 2. Heavy-duty,high-quality design |
| 3. Deep knurled socket sleeve for positive gripping |
| 3. Proven and positive connection using ball-locking mechanism |

| Specifications: |
|---|
| 1. Used for pneumatic systems. |
| 2. Working pressure: Less than 145 Psi; Max pressure: 150 Psi. |
| 3. Material: Brass and steel are both available. |
| 4. Temperature range: -20~70 Celsius degree. |
| 5. Air flow: 35 SCFM at 100 PSIG inlet with 10 PSIG pressure. |

Model 20 PH offered come in heavy duty construction finish and provide for quick coupling support. The product provides for proven and positive connection using ball-locking mechanism and find suitability for use with pneumatic systems. Some of its features include heavy duty construction design; accepting 1/4 NITTO type plugs; capability to handle working pressures of less than 145 Psi; working temperature range of -20 to 70 degree Celsius and others.



Model 20 PH

| Features: |
|--|
| 1. Accepts 1/4 NITTO type plugs |
| 2. Heavy-duty,high-quality design |
| 3. Deep knurled socket sleeve for positive gripping |
| 4. Proven and positive connection using ball-locking mechanism |

| Specifications: |
|---|
| 1. Used for pneumatic systems. |
| 2. Working pressure: Less than 145 Psi; Max pressure: 150 Psi. |
| 3. Material: Brass and steel are both available. |
| 4. Temperature range: -20~70 Celsius degree. |
| 5. Air flow: 35 SCFM at 100 PSIG inlet with 10 PSIG pressure. |

Quick Connect Couplers



Model 20 SH

Model 20 SH offered comes designed and finished to accept 1/4 NITTO type plugs and come in heavy-duty construction finish for lasting service performance. Further, these come in high-quality design standards and feature presence of deep knurled socket sleeve for delivering positive gripping support. Some of its features suitable for use in pneumatic systems maximum pressure of 150 Psi; available in stainless steel/brass material finish; working temperature range of -20 to 70 degree Celsius among others.

| Features: |
|--|
| 1. Accepts 1/4 NITTO type plugs |
| 2. Heavy-duty,high-quality design |
| 3. Deep knurled socket sleeve for positive gripping |
| 3. Proven and positive connection using ball-locking mechanism |

| Specifications: |
|---|
| 1. Used for pneumatic systems. |
| 2. Working pressure: Less than 145 Psi; Max pressure: 150 Psi. |
| 3. Material: Brass and steel are both available. |
| 4. Temperature range: -20~70 Celsius degree. |
| 5. Air flow: 35 SCFM at 100 PSIG inlet with 10 PSIG pressure. |

Model 20 PM offered come in heavy duty construction finish and provide for quick coupling support. The product provides for proven and positive connection using ball-locking mechanism and find suitability for use with pneumatic systems. Some of its features include heavy duty construction design; accepting 1/4 NITTO type plugs; capability to handle working pressures of less than 145 Psi; working temperature range of -20 to 70 degree Celsius and others.



Model 20 PM

| Features: |
|--|
| 1. Accepts 1/4 NITTO type plugs |
| 2. Heavy-duty,high-quality design |
| 3. Deep knurled socket sleeve for positive gripping |
| 4. Proven and positive connection using ball-locking mechanism |

| Specifications: |
|---|
| 1. Used for pneumatic systems. |
| 2. Working pressure: Less than 145 Psi; Max pressure: 150 Psi. |
| 3. Material: Brass and steel are both available. |
| 4. Temperature range: -20~70 Celsius degree. |
| 5. Air flow: 35 SCFM at 100 PSIG inlet with 10 PSIG pressure. |

Quick Connect Couplers



Model 20 SM

Model 20 SM offered feature precision construction finish and find suitability for accepting of 1/4 NITTO type plugs. Coming in heavy-duty construction finish and quality design standards, the product also comes with deep knurled socket sleeve for providing positive gripping support. Some of its features include provide for positive connection using superior ball-locking mechanism; allows for quick coupling support; suitable for use in pneumatic systems; capability to handle maximum pressure of 150 Psi.

Features:

1. Accepts 1/4 NITTO type plugs
2. Heavy-duty,high-quality design
3. Deep knurled socket sleeve for positive gripping

Specifications:

1. Used for pneumatic systems.
2. Working pressure: Less than 145 Psi;
Max pressure: 150 Psi.
3. Material: Brass and steel are both available.
4. Temperature range: -20~70 Celsius degree.
5. Air flow: 35 SCFM at 100 PSIG inlet with 10 PSIG pressure.

Model 20 SF offered can be made available by us in durable and sturdy finish support and find suitability for use in pneumatic systems. The product is suitable for use in working pressure of less than 145 Psi and can be developed in both brass and steel metal finish. Some of its features include working temperature range of -20 to 70 degree Celsius; air flow rate of 35 SCFM at 100 PSIG inlet with 10 PSIG pressure; heavy-duty construction design; quick coupling support through ball-locking mechanism among others.



Model 20 SF

Features:

1. Accepts 1/4 NITTO type plugs
2. Heavy-duty,high-quality design
3. Deep knurled socket sleeve for positive gripping
4. Proven and positive connection using ball-locking mechanism

Specifications:

1. Used for pneumatic systems.
2. Working pressure: Less than 145 Psi;
Max pressure: 150 Psi.
3. Material: Brass and steel are both available.
4. Temperature range: -20~70 Celsius degree.
5. Air flow: 35 SCFM at 100 PSIG inlet with 10 PSIG pressure.

Mould Type Coupling



Plug Male

Plug Male offered come in precision constructed finish and is made available under range mold couplings. Here, our expertise lies in offering these in steel (nickel plated), brass and stainless steel metal finish options. Some of its features include available in work pressure options of 300 PSI; available size options of 1/8" BSP, 1/4" BSP, 3/8" BSP, 1/2" BSP, 1/2" BSP, 3/4" BSP, 1" BSP; choice of availability in OEM specifications as demanded by the customers.

Hose Socket offered come in precision designed & constructed finish and are made available under head mould couplings. These sockets allow achieving symmetrical quick connection without male/female threads, thus making them suitable for making connection to fire hoses. Further, the use of superior grade alloy finish also makes these provide for longer service life, corrosion proof usage as well as maintenance-free performance. Some of its features include allows usage as symmetrical quick connection socket; socket has no female and male part and allows for easy usage while connecting to hose ends and others.



Hose Socket



Extra Long Plug

Extra Long Plug offered comes in precision designed and constructed finish and provides for optimum functional support in given application demands. Offered under range mold couplings, these are made available in standard sealing material of Nitrile (-20° C to +75° C) as well as in options of Viton (-20° C to +170° C). Some of it features include available in different metal choices like nickel plated steel, stainless steel, brass and others; suitable for handling work pressures of 300 PSI; option of OEM construction and others.

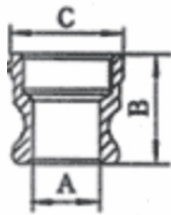
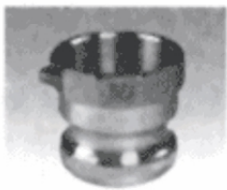
Cam lock Coupling

PERFECT - TITE couplings enable pipe and hose connections to be made without the use of hands tools; thus eliminating the difficulty in making threaded connections or a flanged connection. Almost instantly connections can be made to an outlet, a faucet, a valve, a tank or coupling lengths of hose. No pipe fitting skills, wrenches or tools are required. A connection is made by simply pushing the handles down to the sides of the coupler.

DESIGN AND CONSTRUCTION

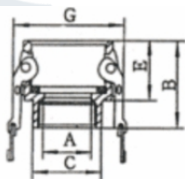


- SUPERIOR quality body – precision machined surfaces
- Meets or exceeds Military standards
- Highest quality standards employed
- Uniform wall thickness assessors no coupler bodies
- Large diameter cam ears for longer service life
- Extra high strength handles for assurance in connections
- Recess retains gasket in coupler
- Stainless Steel cam pins for long wear and ease of replacement



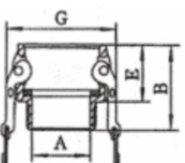
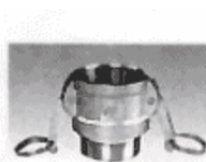
TYPE-A

| SIZE | 1/2" | 3/4" | 1" | 1 1/4" | 1 1/2" | 2" | 2 1/2" | 3" | 4" | 5" | 6" |
|------|------|------|----|--------|--------|----|--------|----|-----|-----|-----|
| A | 21 | 21 | 24 | 28.5 | 36 | 45 | 56.5 | 73 | 98 | 122 | 148 |
| B | 38 | 38 | 48 | 56 | 60 | 46 | 87 | 73 | 78 | 95 | 86 |
| C | 32 | 32 | 40 | 48 | 56 | 67 | 83 | 96 | 127 | 154 | 190 |



TYPE-D

| SIZE | 1/2" | 3/4" | 1" | 1 1/4" | 1 1/2" | 2" | 2 1/2" | 3" | 4" | 5" | 6" |
|------|------|------|----|--------|--------|----|--------|-----|-----|-----|-----|
| A | 16 | 19 | 26 | 30 | 39 | 50 | 58 | 72 | 98 | 122 | 145 |
| B | 52 | 52 | 62 | 68 | 71 | 78 | 85 | 91 | 96 | 102 | 118 |
| C | 32 | 32 | 40 | 48 | 56 | 67 | 83 | 96 | 127 | 154 | 190 |
| E | 32 | 32 | 40 | 48 | 49 | 54 | 69 | 60 | 62 | 62 | 72 |
| G | 53 | 53 | 60 | 78 | 85 | 96 | 110 | 127 | 156 | 185 | 220 |



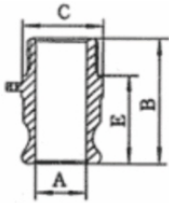
TYPE-B

| SIZE | 1/2" | 3/4" | 1" | 1 1/4" | 1 1/2" | 2" | 2 1/2" | 3" | 4" | 5" | 6" |
|------|------|------|----|--------|--------|----|--------|-----|-----|-----|-----|
| A | 14 | 14 | 24 | 28 | 35 | 51 | 58 | 72 | 98 | 122 | 145 |
| B | 52 | 52 | 64 | 72 | 73 | 80 | 90 | 94 | 101 | 102 | 118 |
| E | 32 | 32 | 40 | 48 | 49 | 54 | 59 | 60 | 62 | 32 | 72 |
| G | 53 | 53 | 60 | 78 | 85 | 96 | 110 | 127 | 156 | 185 | 220 |

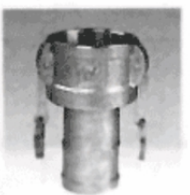
Cam lock Coupling



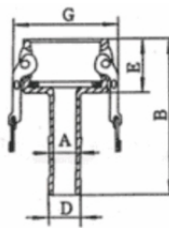
TYPE-F



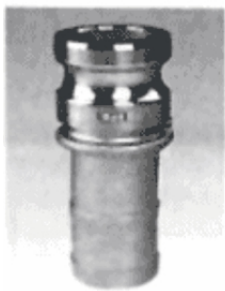
| SIZE | 1/2" | 3/4" | 1" | 1 1/4" | 1 1/2" | 2" | 2 1/2" | 3" | 4" | 5" | 6" |
|------|------|------|----|--------|--------|----|--------|-----|-----|-----|-----|
| A | 21 | 21 | 24 | 28.5 | 36 | 45 | 56.5 | 73 | 98 | 122 | 148 |
| B | 56 | 56 | 72 | 80 | 84 | 88 | 100 | 106 | 114 | 121 | 130 |
| C | 32 | 32 | 40 | 48 | 56 | 67 | 83 | 96 | 127 | 154 | 190 |
| E | 39 | 39 | 48 | 48 | 56 | 61 | 62 | 69 | 74 | 79 | 82 |



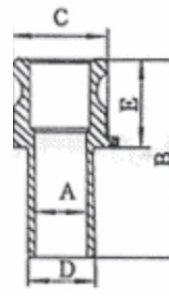
TYPE-C



| SIZE | 1/2" | 3/4" | 1" | 1 1/4" | 1 1/2" | 2" | 2 1/2" | 3" | 4" | 5" | 6" |
|------|------|------|----|--------|--------|----|--------|-----|-----|-----|-----|
| A | 16 | 19 | 26 | 30 | 39 | 50 | 58 | 72 | 98 | 122 | 145 |
| B | 52 | 52 | 62 | 68 | 71 | 78 | 85 | 91 | 96 | 102 | 118 |
| D | 32 | 32 | 40 | 48 | 56 | 67 | 83 | 96 | 127 | 154 | 190 |
| E | 32 | 32 | 40 | 48 | 49 | 54 | 59 | 60 | 62 | 62 | 72 |
| G | 53 | 53 | 60 | 78 | 85 | 96 | 110 | 127 | 156 | 185 | 220 |



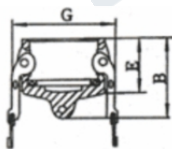
TYPE-E



| SIZE | 1/2" | 3/4" | 1" | 1 1/4" | 1 1/2" | 2" | 2 1/2" | 3" | 4" | 5" | 6" |
|------|------|------|-----|--------|--------|-----|--------|-----|-----|-----|-----|
| A | 14 | 19 | 24 | 28 | 35 | 48 | 58 | 72 | 98 | 122 | 145 |
| B | 98 | 98 | 110 | 121 | 125 | 140 | 158 | 170 | 182 | 196 | 220 |
| D | 20 | 20 | 26 | 33 | 39 | 52 | 65 | 77 | 103 | 130 | 155 |
| E | 40 | 40 | 46 | 53 | 56 | 61 | 65 | 66 | 70 | 72 | 79 |
| C | 34 | 34 | 38 | 48 | 56 | 66 | 80 | 102 | 132 | 154 | 184 |



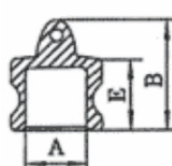
TYPE-Dust Cap



| SIZE | 1/2" | 3/4" | 1" | 1 1/4" | 1 1/2" | 2" | 2 1/2" | 3" | 4" | 5" | 6" |
|------|------|------|----|--------|--------|----|--------|-----|-----|-----|-----|
| B | 45 | 45 | 54 | 65 | 69 | 80 | 84 | 85 | 94 | 94 | 112 |
| E | 32 | 32 | 40 | 48 | 49 | 54 | 59 | 60 | 62 | 62 | 72 |
| G | 53 | 53 | 60 | 78 | 85 | 96 | 110 | 127 | 156 | 185 | 220 |

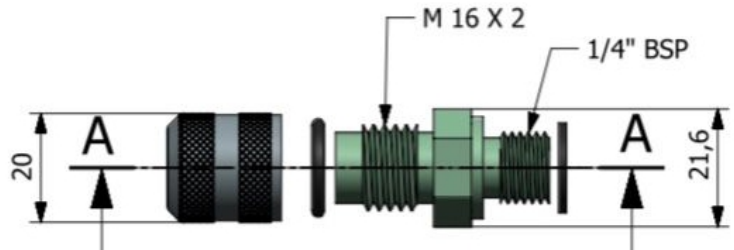


TYPE-Dus Plug



| SIZE | 1/2" | 3/4" | 1" | 1 1/4" | 1 1/2" | 2" | 2 1/2" | 3" | 4" | 5" | 6" |
|------|------|------|----|--------|--------|----|--------|----|----|-----|-----|
| A | 21 | 21 | 24 | 28.5 | 36 | 45 | 56.5 | 73 | 98 | 122 | 148 |
| B | 37 | 37 | 44 | 55 | 64 | 68 | 70 | 80 | 80 | 80 | 98 |
| E | 24 | 24 | 30 | 38 | 41 | 43 | 45 | 52 | 48 | 48 | 58 |

Minimize Coupling



Size : M16 x 1/4"

Perfect Engineers Minimize couplings are used for checking the pressure in a given line or a given pressure system. The minimize coupling is a small sized precision coupling having a check valve system that holds the entire pressure of the line or system without allowing any leaks or pressure drops. When the minimize hose is pressed connected to the coupling, the needle within the minimize hose pushes open the valve of the minimize coupling thus allowing flow of the fluid, either oil or gas, into the hose where the pressure inside the machine is transferred to the minimize hose. This minimize hose is again connected to a pressure gauge or pressure measuring system which shows the pressure that existed in the hydraulic machine, vessel or system.

Minimize couplings are test couplings suitable for use for pressure upto 700 bars. These can be used in oil and gas lines. The materials of construction are Mild Steel and Stainless Steel of various grades. These are used in oil, water and gas systems and act as test points of the respective pressure system. The minimize Couplings and hoses are also used for releasing the excess pressure in hydraulic systems and hydraulic lines.

Compression Fittings

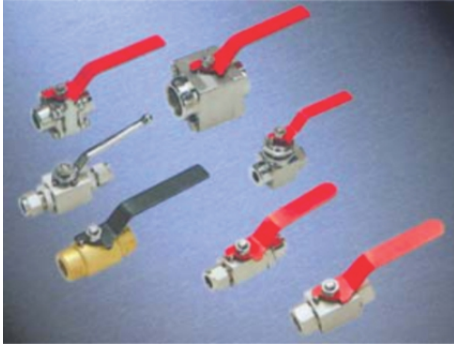
Compression fittings are used extensively in hydraulic, gas, and water systems to enable the connection of tubing to threaded components like valves and tools. Compression fittings are suited to a variety of applications, such as plumbing systems in confined spaces where copper pipe would be difficult to solder without creating a fire hazard, and extensively in hydraulic industrial applications. A major benefit is that the fittings allow easy disconnection and reconnection.



Pipe Fittings



Ball Valve



Features :

- 2 Way General Purpose.
- 1 PC, 2PC & 3PC Design.
- 3 way, 4way & panel Mounted.
- Jacketed Fire Safe Design.

Applications :

High pressure instrument lines, on/off shore, pneumatic systems, refineries, Pilot plants, analyzer labs, Gas sampling Lines etc.

MATERIALS OF CONSTRUCTION:

| | |
|------------------|--|
| BALL | : S.S316. |
| BODY | : S.S, BRASS, CARBON STEEL, MONEL. |
| SEATS | : PTFE. |
| GLAND PACKING | : S.S & PTFE. |
| INLET GASKET | : VITON & PTFE. |
| HANDLE | : M.S COLOR CODED & S.S. |
| TEMPARTURE | : -300 TO 2000 C. |
| WORKING PRESSURE | : UP TO 6000 psig. |
| SIZE RANGE | : 1/8"to 4". |
| END CONNECTIONS | : SCREWED FEMALE/ MALE, TUBE FITTINGS SOCKETWELD, BUTTWELD & FLANGEND. |

FEATURES :

- Handle position indicates flow direction.
- Straight through flow for minimum pressure drop.
- Micro finished ball for sealing.
- 900 actuation.
- Low operating torques.
- Two way installation.
- Viton O-rings or telfon washers for increased corrosion resistance.
- Each valve is 100% tested, to ensure leak tightness at seat, shell & gland.

Needle Valve



Types : Screwed, Integral, Union & 2 Valves .

Applications : Hydraulic systems, Oxygen service, Instrumentation sampling systems, Test stands, High Temp. to 700 OF, Cooling Oil Lines.

MATERIALS OF CONSTRUCTION:

| | |
|-------------------|--|
| BODY | : S.S, BRASS, CARBON STEEL, MONEL. |
| STEM | : S.S316. |
| GLAND PACKING | : PTFE, Grafoil. |
| TEMPARTURE | : -450 to 2500C. |
| WORKING PRESSURE | : UP to 10,000 Psig. |
| ORIFICE DIA | : 1/8" (3mm) to 1/2 "(12.7mm). |
| NORMAL SIZE RANGE | : 1/8"to 2". |
| | CARBON STEEL, ALUMINIMUM OR S.S. |
| | SCREWED FEMALE/ MALE, TUBE END, SOCKETWELD, BUTTWELD & FLANGEND. |

FEATURES :

| | |
|---------------|---|
| BODY | : 1 Piece, 2piece union bonet type with lapped seat. |
| STEM | : Choice of replacement stem tip, v point, regulating or blunt stems for exact flow requirements. |
| NEEDLE | : Precision Ground, Lapped Tip for perfect metal to metal sealing. |
| LUBRICATION | : Anti-seize lubricants on stem threads for easy operations & long life. |
| GLAND TESTING | : Adjustable. |
| TESTING | : Each valve is 100% tested to ensure leak tightness at seal shell, & Gland. |



APPLICATION INDUSTRIES

- Oil & Gas Industries
- Steel Plant & Rolling Mills Mfg.
- Automobile & Heavy Mobile Vehicle
- Material Handling Stores
- Agriculture Machinery Equipments
- Refineries
- Analyzer-lab & Testing Equipments
- Paint Industries
- Car Care Systems
- Life Sciences
- Super Market Storage & Rack System
- Automation Machinery
- Multi Parking Systems
- Military
- Power Generations Systems
- Cement Industry Machinery
- Motion & Control Tech. Equipment
- Hydrostatic Drive Systems
- Hydraulic Press & Power Packs
- Cooling & Heating Systems
- Packaging Equipments
- Engines & Railways
- Pulp Paper Machinery
- Fuel Cells Components
- Machine Tool Application
- Industrial Mining Equipments
- Food & Beverages Equipments
- Marine Project
- Oil Mill Plants
- Aerospace & Aircraft System
- Pollution Control Equipments
- Offshore Engineering
- Plastic / Rubber Processing Machines
- Chemical Machinery

OUR CLIENTS





Perfect
Engineers

SINCE 1988



OSHIWARA INDUSTRIAL CENTRE PREMISES CO. OP. SOCIETY LTD.
1 ST FLOOR, GALA NO. 173/175, D - WING, OPP OSHIWARA BUS DEPOT.
NEW LINK ROAD, GOREGAON (W), MUMBAI - 400 104



+91 22-49620199

+91 9870927482

+91 9004860491



perfectqrc@gmail.com | salesperfectqrc@gmail.com



www.perfectqrc.com